

# Chillicothe Sportsmen's Club



**Sight Picture**

**May 2016**



**May 17, 1943, The crew of  
The "Memphis Belle completes  
25 Missions**



**May 29, 1943 Norman Rockwell's  
illustration of "Rosie The Riveter"  
appears on the Saturday Evening Post**

**Per our membership director Bob Griffith:**

**New Members: (we are full)**

**Welcome and enjoy your activities.**

**Indoor Work Party:**

**Work Hours – Indoor Range Cleanup and de-leading: Saturday, May 7 at 9 AM, Indoor Range and clubhouse . Questions – call Bob Bjerke @ (309) 692-1800.**

## **Outdoor Work Party:**

The next outdoor work party will be on May 7 2016 at 8:00 AM. We will be cleaning up trash, cutting up trees, moving heavy tables, and burning brush piles if possible. Bring chain saws, tree trimming tools, trucks, trailer, tractors with buckets.

All ranges are closed to shooting until after the work party is complete (about 12:00 PM) except for scheduled events.

Contact Steve Schneckenburger 309-657-0170 for information.

## **Bowling Pins:**

If anyone knows of a supply of bowling pins for our bowling pin shoots (preferably free) contact Kevin Monk at 309-443-5339

## **Intro To High Power Rifle Match Shooting:**

What do I need to start shooting high power rifle competition at CSC?

- Hearing and Eye protection along with money for ammo and match fees. THAT'S IT!!!
- This runs \$36 to \$41 for a 60 round draw of 223 with the match fee.
- CSC has National Match AR-15's and Service Grade M1 Garands available for borrowing at the match
- 223, 30-06, and 308 available for very competitive prices at the matches.

When are the matches and what do the other competitors bring for equipment?

- The matches are usually held on the 3rd Saturday of the month with the first relay starting at 8:30 AM March through October. First Match in 2016 is March 19 at 1:00. Watch the CSC Calendar.
- What other equipment (besides hearing and eye protection) do others bring?
  - Spotting Scope
  - Shooting mat – club has these available
  - Stapler
  - Shooting jacket – really all you need is something to protect your elbows in the prone position. A sweatshirt works fine.
  - Your own rifle and ammo. The usual guns are AR-15, M1 Garand, or M1A.
  - Rifle Sling

Please contact Chris Bach at (309)256-1712 if you have any questions.

Also, If anyone has access to an angle mower for mowing our ditches and roads, please contact one of the club officers. We would like to hire your services.

# Club Officers:

President: Chris Bach (309) 256-1712

Vice President: Derek Howald (309) 657-1518

Secretary Donald Clemens (309) 274-6870

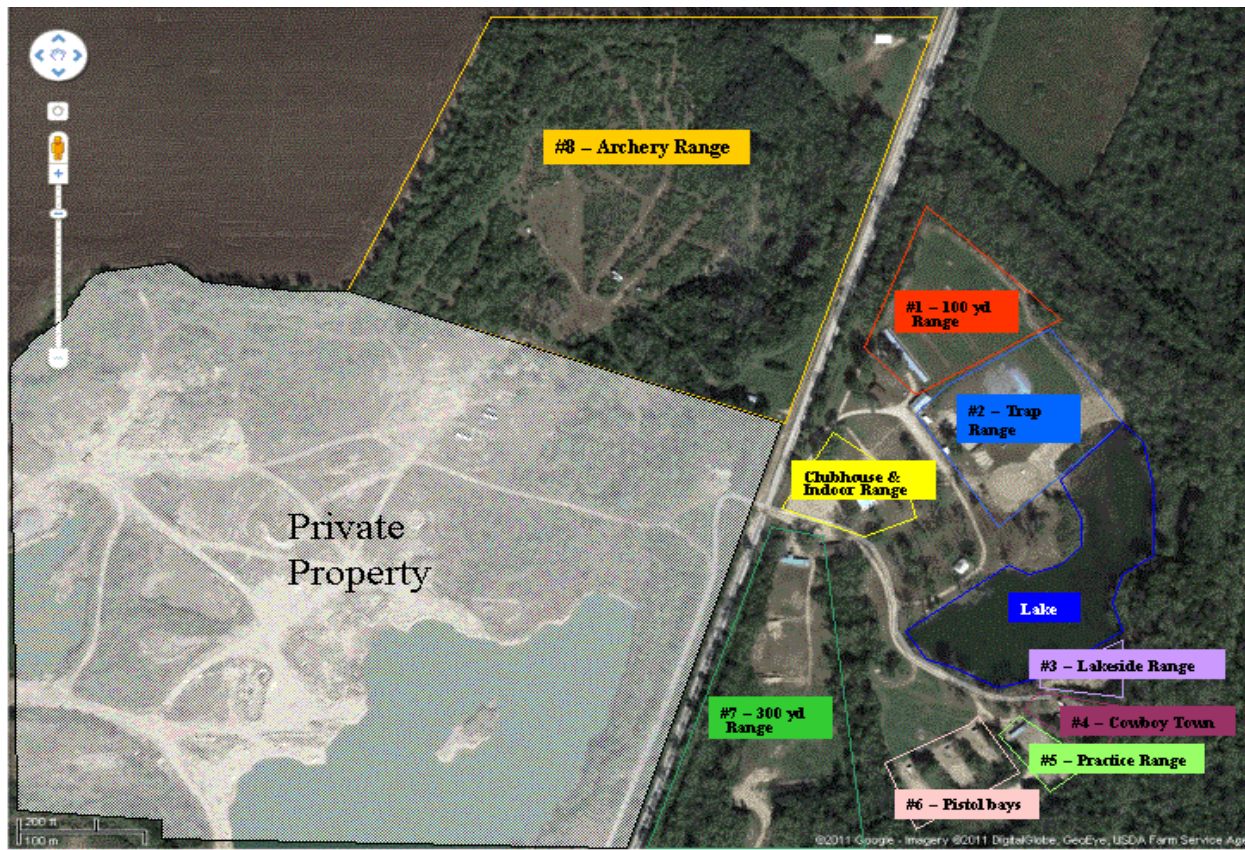
Treasurer: Lowell Bennett (309) 274-5586

Membership Director: Bob Griffith (309) 274-2068

## RANGE NUMBERS

The following are the range numbers:

<u>RANGE</u>	<u>LOCATION</u>
1 --	100 yard range
2 --	Trap range
3 --	Short lakeside range (just north of Cowboy Town)
4 --	Cowboy Town
5 --	Practice Range
6 --	3-bays
7 --	300 yard range
8 --	Archery Range



# Chillicothe Sportsmen's Club Calendar of Activities

## May

<i>Sun</i>	<i>Mon</i>	<i>Tue</i>	<i>Wed</i>	<i>Thu</i>	<i>Fri</i>	<i>Sat</i>
<b>1</b> 2—Open Trap—9 AM 7—CF Buffalo—9 AM 5—MZL-R—10 AM	<b>2</b> 1-Sporting Rifle—5 PM	<b>3</b> 1—WTSP—6 PM	<b>4</b> 2—Open Trap—5 PM League(5)—6 PM	<b>5</b>	<b>6</b>	<b>7</b> Outdoor Work Party—8 AM Archery Work Party—8AM Indr & CH Clean-8 AM (Delead Indr Range) 4,5,6a—Cowboy Setup—1 PM
<b>8</b> <i>Mother's Day</i> 4,5,6a-Cowboy—9 AM	<b>9</b> 1-Sporting Rifle—5 PM	<b>10</b> <i>Board Meeting 6:30PM</i>	<b>11</b> 2—Open Trap—5 PM League(6)—6 PM	<b>12</b> 1-Outdr Bullseye-6 PM	<b>13</b>	<b>14</b> 1-Mauser Match—9 AM 5--USRA Handgun 1---9 AM
<b>15</b> <i>1-CLOSED FOR ATA</i> 2—ATA MATCH—8 AM 6a,6b,6c-22 Steel-9 AM 7—RF Buffalo—9 AM 5—MZL-R—10 AM	<b>16</b> <i>1—DNR/CPO—8 AM – 3 9M</i> 1-Sporting Rifle—5 PM <b>CH—NMO—6:30 PM</b>	<b>17</b> <i>1—DNR/CPO—8 AM – 3 9M</i> 1—WTSP—6 PM	<b>18</b> <i>1—DNR/CPO—8 AM – 3 9M</i> 2—Open Trap—5 PM League(7)—6 PM	<b>19</b> <i>1—DNR/CPO—8 AM – 3 9M</i>	<b>20</b> Archery Setup—9 AM <i>CH-NRA Rifle Inst Class(RAB)—6 PM</i>	<b>21</b> Archery 3-D—7 AM <i>CH-NRA Rifle Inst Class(RAB)—8 AM</i> 1—HPR—7:30 AM 1—M-1 Garand-10 AM 5—Bowling Pin—9 AM 3,4,6a,6b,6c—USPSA Setup—1 PM
<b>22</b> Archery 3-D—7 AM Archery Teardown-1PM <i>CH-NRA Rifle Inst Class(RAB)—8 AM</i> 3,4,6a,6b,6c—USPSA—9 AM	<b>23</b> <i>1—DNR/CPO—8 AM – 3 9M</i> 1-Sporting Rifle—5 PM	<b>24</b> <i>1—DNR/CPO—8 AM – 3 9M</i> 1—WTSP—6 PM	<b>25</b> <i>1—DNR/CPO—8 AM – 3 9M</i> 2—Open Trap—5 PM League(8)—6 PM	<b>26</b> <i>1—DNR/CPO—8 AM – 3 9M</i> 1-Outdr Bullseye-6 PM	<b>27</b> 1—TWAW—6 PM	<b>28</b> 4,5,6a,6b,6c—3 Gun Setup—1 PM
<b>29</b> 4,5,6a,6b,6c—3 Gun Match—8 AM	<b>30</b> <i>Memorial Day</i> 1-Sporting Rifle—5 PM	<b>31</b> 1—WTSP—6 PM				

## 2016

Note that the number in front of the event indicates the range that the activity is taking place at.

Last Updated: 5/27/2016

# Chillicothe Sportsmen's Club Calendar of Activities

## June

<i>Sun</i>	<i>Mon</i>	<i>Tue</i>	<i>Wed</i>	<i>Thu</i>	<i>Fri</i>	<i>Sat</i>
			<b>1</b> 2—Open Trap—5 PM League(9)—6 PM	<b>2</b>	<b>3</b>	<b>4</b> Outdoor Work Party—8 AM Archery Work Party—8AM CH—Trap--Archery—4H Regional Meet—8 AM—5PM
<b>5</b> 2—Open Trap—9 AM 7—CF Buffalo—9 AM 5—MZL-R—10 AM	<b>6</b> 1-Sporting Rifle—5 PM 2--Pheasants Forever—6 PM	<b>7</b> 1—WTSP—6 PM	<b>8</b> 2—Open Trap—5 PM League(10)—6 PM	<b>9</b> 1-Outdr Bullseye-6 PM	<b>10</b>	<b>11</b> Indr & CH Clean-9 AM 1-Mauser Match—9 AM 4,5,6a—Cowboy Setup—1 PM
<b>12</b> 4,5,6a-Cowboy—9 AM	<b>13</b> 1-Sporting Rifle—5 PM 2--Pheasants Forever—6 PM	<b>14</b> <i>Flag Day</i> Board Meeting 6:30PM	<b>15</b> 2—Open Trap—5 PM League(11)—6 PM	<b>16</b>	<b>17</b> Archery Setup—9 AM	<b>18</b> Archery 3-D—7 AM 1—HPR—7:30 AM 5—Bowling Pin—9 AM
<b>19</b> <i>Father's Day</i> Archery 3-D—7 AM Archery Teardown-1PM 2—Open Trap—9 AM 6a,6b,6-22 Steel-9 AM 7—RF Buffalo—9 AM 2—MZL-Clay Bird Match—9AM	<b>20</b> 1-Sporting Rifle—5 PM 2--Pheasants Forever—6 PM CH—NMO—6:30 PM	<b>21</b> 1—WTSP—6 PM	<b>22</b> 2—Open Trap—5 PM League(12)—6 PM	<b>23</b> 1-Outdr Bullseye-6 PM	<b>24</b> 1—TWAW—6 PM	<b>25</b> 1—1911 Match—8 AM 3,4,6a,6b,6c—USPSA Setup—1 PM
<b>26</b> 3,4,6a,6b,6c—USPSA—9 AM	<b>27</b> 1-Sporting Rifle—5 PM 2--Pheasants Forever—6 PM	<b>28</b> 1—WTSP—6 PM	<b>29</b> 2—Open Trap—5 PM League(13)—6 PM	<b>30</b>		

## 2016

Note that the number in front of the event indicates the range that the activity is taking place at.

Last Updated: 5/27/2016