

Chillicothe Sportsmen's Club



Sight Picture

July 2016



July 30 1945 the USS Indianapolis is torpedoed and sank after it had delivered the atomic bomb parts to Tinian Island



July 18, 1942 the ME-262 jet fighter flies for the first time

Tactical Carbine I--Range 1 \$100, \$75 for USRA members

Saturday July 30, 2016

This is an introductory course for Tactical Carbine. This course is designed for those that are familiar with firearms, but have not had tactical carbine training. It is designed for those that are looking to take their skills to the next level.

usrifleman.org

847-920-USRA (8772) or Steve Schnurbusch 573-768-2450

Outdoor Work Party:

The next work party will be July 9 starting at 8:00AM. We will be cleaning up brush behind 4-stall garage and on range 7, bring trailers, chainsaws, brush cutting tools, rakes, shovels, etc. We will also need screw guns, saws and hammers to make targets frames; we will have the normal cleanup of ranges.

On Saturday, July 9; ALL RANGES ARE CLOSED TO SHOOTING UNTIL AFTER THE WORKPARTY IS COMPLETE (about 12:00PM) except for schedule events.

Contact Steve Schneckenburger at 309-657-0170 for more information.

Per our membership director Bob Griffith:

New Members: **Our annual membership is closed. If you know someone who wants to apply, send in your application and application fee. It will be kept in the queue.**

Welcome and enjoy your activities.

Intro To High Power Rifle Match Shooting:

What do I need to start shooting high power rifle competition at CSC?

- Hearing and Eye protection along with money for ammo and match fees. **THAT's IT!!!**
 - This runs \$36 to \$41 for a 60 round draw of 223 with the match fee.
 - CSC has National Match AR-15's and Service Grade M1 Garands available for borrowing at the match
 - 223, 30-06, and 308 available for very competitive prices at the matches.

When are the matches and what do the other competitors bring for equipment?

- The matches are usually held on the 3rd Saturday of the month with the first relay starting at 8:30 AM March through October. First Match in 2016 is March 19 at 1:00. Watch the CSC Calendar.
- What other equipment (besides hearing and eye protection) do others bring?
 - Spotting Scope
 - Shooting mat – club has these available

- Stapler
- Shooting jacket – really all you need is something to protect your elbows in the prone position. A sweatshirt works fine.
- Your own rifle and ammo. The usual guns are AR-15, M1 Garand, or M1A.
- Rifle Sling

Please contact Chris Bach at (309)256-1712 if you have any questions.

Indoor Range:

Thanks to Bob Bjerke and his crew, the indoor range has been painted, cleaned, and the lead removed, and the sand cleaned. A big thanks to all.

July Work Hours – Clubhouse & Indoor Range .

NOTE THE DATE & Cleanup: Saturday, July 9 at 8 AM– call Bob Bjerke @ (309) 692-1800.

Club Raffle

The club is offering a chance at a 1911 Rock Island .45 ACP pistol. \$20 per chance. 100 chances sold. The drawing will be held when all the chances have been sold. Contact Chris Bach at (309) 256-1712.

Club Officers:

President: Chris Bach (309) 256-1712

Vice President: Derek Howald (309) 657-1518

Secretary Donald Clemens (309) 274-6870

Treasurer: Lowell Bennett (309) 274-5586

Membership Director: Bob Griffith (309) 274-2068

And Finally:

Look at the work going on at the club.

When things are done we will have an even better facility.

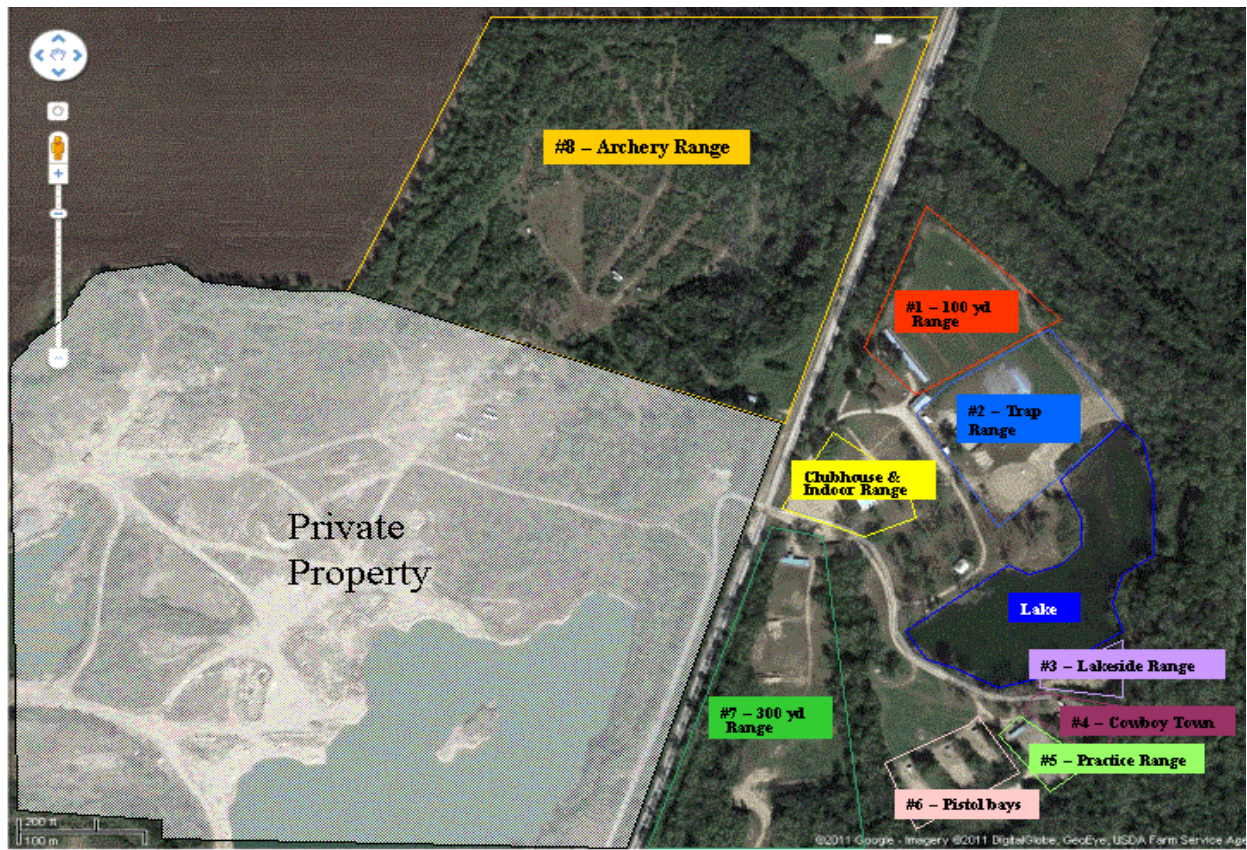
Also we have our own wildlife refuge here. If you go to the club grounds early in the morning, it is hard to tell what you will see.



RANGE NUMBERS

The following are the range numbers:

| <u>RANGE</u> | <u>LOCATION</u> |
|--------------|--------------------------------------------------|
| 1 -- | 100 yard range |
| 2 -- | Trap range |
| 3 -- | Short lakeside range (just north of Cowboy Town) |
| 4 -- | Cowboy Town |
| 5 -- | Practice Range |
| 6 -- | 3-bays |
| 7 -- | 300 yard range |
| 8 -- | Archery Range |



Chillicothe Sportsmen's Club Calendar of Activities

July

| Sun | Mon | Tue | Wed | Thu | Fri | Sat |
|------------------------------------------------------------------------------------------------------------------------------------------------------------------------------------|-------------------------------------------------------------------------------------------|-----------------------------------|---------------------------------------------------|------------------------------------|-----------------------------------------------------------------------|------------------------------------------------------------------------------------------------------------------------------------------|
| | | | | | 1 | 2 |
| 3 1-CLOSED FOR ATA 2-ATA MATCH—8 AM 7-CF Buffalo—9 AM 5-MZL-R—10 AM | 4 <i>Independence Day</i> 1-Sporting Rifle—5 PM 2--Pheasants Forever—6 PM | 5 1--WTSP—6 PM | 6 2--Open Trap—5 PM League(14)—6 PM | 7 2--Open Trap—6 PM | 8 | 9 Outdoor Work Party—8 AM Archery Work Party—8AM Indr & CH Clean-8 AM 1-Mauser Match—9 AM 4,5,6a—Cowboy Setup—1 PM |
| 10 4,5,6a-Cowboy—9 AM | 11 1-Sporting Rifle—5 PM 2--Pheasants Forever—6 PM | 12 Board Meeting 6:30PM | 13 2--Open Trap—5 PM League(15)—6 PM | 14 1-Outdr Bullseye-6 PM | 15 Archery Setup—9 AM CH-NRA Pistol Inst Class(RAB)—6 PM | 16 Archery 3-D—7 AM CH-NRA Pistol Inst Class(RAB)—8 AM 1--HPR—7:30 AM 5--Bowling Pin—9 AM |
| 17 Archery 3-D—7 AM Archery Teardown-1PM CH-NRA Pistol Inst Class(RAB)—8 AM 2--Open Trap—9 AM 6a,6b,6c-22 Steel-9 AM 7--RF Buffalo—9 AM 5--MZL-R—10 AM | 18 1-Sporting Rifle—5 PM 2--Pheasants Forever—6 PM CH--NMO—6:30 PM | 19 1--WTSP—6 PM | 20 2--Open Trap—5 PM League(16)—6 PM | 21 2--Open Trap—6 PM | 22 1--TWAW—6 PM | 23 1-CLOSED FOR ATA 2--ATA DOUBLES MARATHON MATCH—8 AM 3,4,6a,6b,6c--USPSA Setup—1 PM |
| 24 3,4,6a,6b,6c--USPSA—9 AM | 25 1-Sporting Rifle—5 PM 2--Pheasants Forever—6 PM | 26 1--WTSP—6 PM | 27 2--Open Trap—5 PM League(17)—6 PM | 28 1-Outdr Bullseye-6 PM | 29 | 30 1--USRA Carbine I—8 AM 4,5,6a,6b,6c--3 Gun Setup—1 PM |
| 31 | | | | | | |

2016

Note that the number in front of the event indicates the range that the activity is taking place at.

Last Updated: 6/29/2016

Chillicothe Sportsmen's Club Calendar of Activities

August

| <i>Sun</i> | <i>Mon</i> | <i>Tue</i> | <i>Wed</i> | <i>Thu</i> | <i>Fri</i> | <i>Sat</i> |
|-------------------------------------------------------------------------------------------------------------------------------------------|-------------------------------------------------------------|-----------------------------------------------------------------------|---------------------------------------------------------------------------------|----------------------------------------------------------------|-----------------------------------------------------------------|-----------------------------------------------------------------------------------------------------|
| | 1 1-Sporting Rifle—5 PM | 2 1—WTSP—6 PM | 3 2—Open Trap—5 PM League(18)—6 PM | 4 2—Open Trap—6 PM | 5 | 6 Outdoor Work Party—8 AM Archery Work Party—8AM Indr & CH Clean-8 AM |
| 7 2—Open Trap—9 AM 7—CF Buffalo—9 AM 2—MZL Clay Bird Match—9AM | 8 1-Sporting Rifle—5 PM | 9 Board Meeting 6:30PM | 10 2—Open Trap—5 PM League(19)—6 PM <i>Hunter Ed Setup—7 PM</i> | 11 <i>CH—Hunter Ed—5 PM</i> 1-Outdr Bullseye-6 PM | 12 <i>CH—Hunter Ed—5 PM</i> | 13 <i>CH—Hunter Ed—8 AM</i> 1-Mauser Match—9 AM 4,5,6a—Cowboy Setup—1 PM |
| 14 4,5,6a-Cowboy—9 AM | 15 1-Sporting Rifle—5 PM CH—NMO—6:30 PM | 16 1—WTSP—6 PM | 17 2—Open Trap—5 PM League(20)—6 PM | 18 2—Open Trap—6 PM | 19 Archery Setup—9 AM \ 1—TWAW—6 PM | 20 Archery 3-D—7 AM 1—HPR—7:30 AM CH—TWAW—8 AM 5—Bowling Pin—9 AM 5—TWAW—1 PM |
| 21 Archery 3-D—7 AM Archery Teardown-1PM 2—Open Trap—9 AM 6a,6b,6c-22 Steel-9 AM 7—RF Buffalo—9 AM 5—MZL-R—10 AM | 22 1-Sporting Rifle—5 PM | 23 1—WTSP—6 PM | 24 2—Open Trap—6 PM | 25 1-Outdr Bullseye-6 PM | 26 <i>CH—WITO SETUP</i> <i>Indr—WITO-Pistol-PM</i> | 27 <i>WITO—All Ranges—All Day</i> 3,4,6a,6b,6c—USPSA Setup—1 PM |
| 28 3,4,6a,6b,6c—USPSA—9 AM | 29 1-Sporting Rifle—5 PM | 30 1—WTSP—6 PM | 31 CH—Trap League Banque4t—6 PM | | | |
| | | | | | | |

2016

Note that the number in front of the event indicates the range that the activity is taking place at.

Last Updated: 6/29/2016