

Chillicothe Sportsmen's Club News May 2017

WEB PAGE <http://www.chillisportsmen.org/>

Chillicothe Sportsmen's Club, Inc.

PO Box 13, Chillicothe, IL. 61523-0013

Webmaster Tim Vik webmaster@chillisportsmen.org

CONTACTS

If you have any questions or concerns about your Club you may contact any Club Officer listed below or any board member.

| President | V-President | Secretary | Treasurer |
|------------------|--------------------|------------------|------------------|
| Chris Bach | Steve Risinger | Tim Vik | Lowell Bennett |
| (309)256-1712 | (309)449-6268 | (309)258-4809 | (309) 274-5586 |

NOTICES & INFORMATION

Rim-fire Buffalo Matches: Monthly matches are temporarily suspended. It is hoped to have them resumed by the scheduled June date.

Women In The Outdoors: Volunteers are needed to assist with this program on Saturday, August 27. Questions - call - Maria Geiger @ (309) 274-6823.

2017 WORK HOURS

OUTDOOR WORK PARTY: Saturday, May 6, 8 AM. Work will include cleaning up the grounds, dumping barrels, cleaning up fallen tree limbs, repairing targets, etc. ALL RANGES WILL BE CLOSED, EXCEPT FOR ANY SCHEDULED EVENTS, UNTIL AFTER THE WORK PARTY IS FINISHED!!! Contact Steve Schneckenburger @ (309) 657-0170 for more information.

ARCHERY WORK PARTY: Saturday, May 6, 8 AM. Work will include clearing trails, clearing target areas, cutting back honeysuckle. Chainsaws & hedge trimmers are needed. Questions - call Bill Schneckenburger @ (309) 339-1378.

CLUBHOUS & INDOOR RANGE CLEANUP: Saturday, May 6, 8 AM. NOTE THE DATE & TIME CHANGE. Work includes the semi-annual removal of the lead from

the Indoor Range, painting the Backstop, replacing all bad Ceiling Tiles & Light Lenses; cleaning Upstairs fans, Main Hall, Entrance Area, Restrooms, Windows, etc. Questions - call Bob Bjerke @ (309) 692-1800.

HIGH POWER MATCHES

What do I need to start shooting high power rifle competition at CSC?

- Hearing and Eye protection along with money for ammo and match fees. THAT'S IT!!!
 - This runs \$36 to \$41 for a 60 round draw of 223 with the match fee.
 - CSC has National Match AR-15's and Service Grade M1 Garand's available for borrowing at the match
 - 223, 30-06, and 308 ammunition is available for very competitive prices at the matches.

When the matches are and what do the other competitors bring for equipment?

The matches are usually held on the 3rd Saturday of the month with the first relay starting at 8:30 AM, March through October. Watch the CSC Calendar.

- What other equipment (besides hearing and eye protection) do others bring?
 - Spotting Scope
 - Shooting mat - club has these available
 - Stapler
 - Shooting jacket - really all you need is something to protect your elbows in the prone position. A sweatshirt works fine.
 - Your own rifle and ammo. The usual guns are AR-15, M1 Garand, or M1A. The gun is required to have open sights (no optics allowed)
 - Rifle Sling

May EVENTS

3-D ARCHERY: May 20 & 21, 7 AM, Archery Range. Find out how good you are by walking the trail and shooting at the targets as you walk the course. This monthly event is family friendly. Children, 12 and under, get to shoot the course for **FREE**. A limited number of Re-curve bows& arrows are available for any new shooter. Questions - call Bill Schneckenburger@ (309)339-1378.

Mauser Match: May 13, 9 AM, Range #1. Informal slow fire, high-power rifle matches shot from 50 meters on the SR-1 target. Acceptable rifles: 1) Any center-fire rifle with open sights; 2) Any pre-1964 improved military bolt action rep[earer (Ordonnanzgewehr); 3)

Unimproved M 1 Garand or M 1 Carbine. Questions - call Justin Howeler @ (309) 231-6116.

High Power Rifle Match: May 20, 7:30 AM Range #1. (See above for additional information.)

BOWLING PIN MATCH: May 20, 9 AM, Range #5. Great handgun event.

MUZZLELOADING RIFLE MATCH: May 7 & 21, 10 AM, Range #5. You have to build your own bullet every time you want to shoot.

USPSA MATCH: May 27, 9 AM, Ranges #3 thru #6c. Handgun course where you will engage various targets at various distances.

AFFILIATIONS

Your club is affiliated with the following organizations:

| <u>NRA</u> | <u>ISRA</u> | <u>CMP</u> | <u>USPSA</u> | <u>SASS</u> |
|-------------------|--------------------|-------------------|---------------------|--------------------|
|-------------------|--------------------|-------------------|---------------------|--------------------|

NRA National Rifle Association Affiliation Number #R0570

ISRA Illinois State Rifle Association Affiliation Number #00282

CMP Civilian Marksmanship Program Affiliation Number #5208

USPSA United States Practical Shooting Association Affiliation Number
IL-08

SASS Single Action Shooting Society

RANGE 7 UPDATE

When using range 7, please do the following. When going down range, change sign to **"Range closed"** and **turn on the red safety light**. **NO HANDLING OF FIREARMS WHEN PEOPLE ARE DOWN RANGE!!!** When you are back to firing line, change sign to **"Range Open"** and **turn off the red safety light**. This is for your safety.

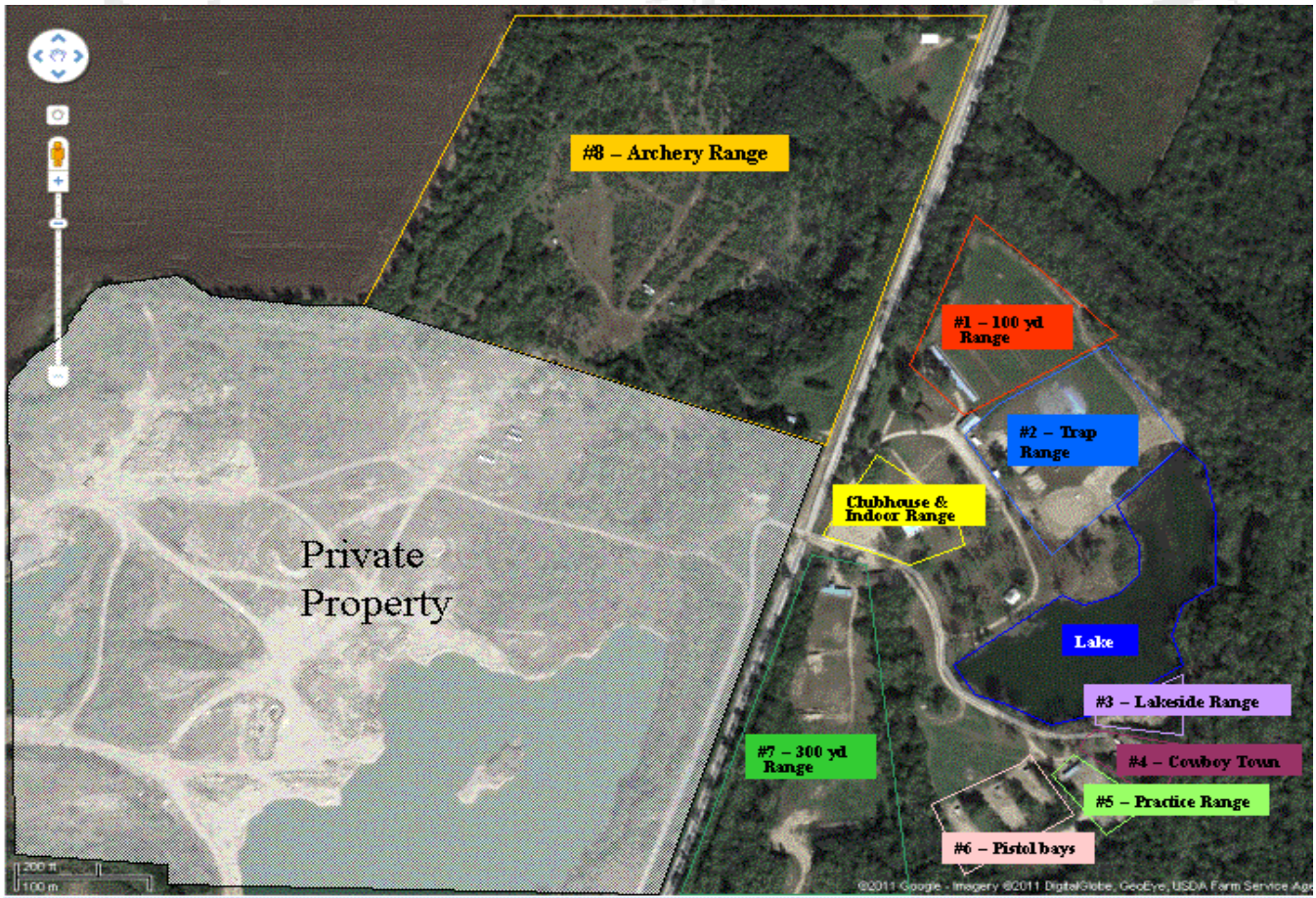


SPORTSMEN CLUB

RANGE NUMBERS

The following are the range numbers:

| <u>RANGE</u> | <u>LOCATION</u> |
|--------------|--|
| 1 -- | 100 yard range |
| 2 -- | Trap range |
| 3 -- | Short lakeside range (just north of Cowboy Town) |
| 4 -- | Cowboy Town |
| 5 -- | Practice Range |
| 6 -- | 3-bays |
| 7 -- | 300 yard range |
| 8 -- | Archery Range |



Chillicothe Sportsmen's Club Calendar of Activities

May

| Sun | Mon | Tue | Wed | Thu | Fri | Sat |
|--|---|---|---|--|--|--|
| | 1 1-Sporting Rifle—5 PM | 2 1—WTSP—6 PM | 3 2—Open Trap—5 PM League(5)—6 PM | 4 2—Open Trap—6 PM | 5 | 6 Outdoor Work Party—8 AM Archery Work Party—8 AM Indr & CH Clean-8 AM (Delead Indr Range) 5—USRA—8 AM |
| 7 2—Open Trap—9 AM 7—CF Buffalo—9 AM 5—MZL-R—10 AM | 8 1—DNR/CPO—7 AM 1-Sporting Rifle—5 PM | 9 1—DNR/CPO—7 AM Board Meeting 6:30PM | 10 1—DNR/CPO—7 AM 2—Open Trap—5 PM League(6)—6 PM | 11 1—DNR/CPO—7 AM 1-Outdr Bullseye-6 PM | 12 | 13 1-Mauser Match—9 AM 4,5—Cowboy Setup—3 PM |
| 14 <u>Mother's Day</u> 1—CLOSED FOR ATA 2—ATA MATCH—8 AM 4,5_Cowboy—9 AM Newsletter Submission Deadline | 15 1-Sporting Rifle—5 PM CH—NMO—6:30 PM | 16 1—DNR/CPO—7 AM 1—WTSP—6 PM | 17 1—DNR/CPO—7 AM 2—Open Trap—5 PM League(7)—6 PM | 18 1—DNR/CPO—7 AM 2—Open Trap—6 PM | 19 Archery Setup—9 AM <i>CH-NRA (TBD) Inst Class—6 PM</i> | 20 Archery 3-D—7 AM <i>CH-NRA (TBD) Inst Class—8 AM</i> 1—HPR—7:30 AM 1—M-1 Garand-10 AM 5—Bowling Pin—9 AM 6a,6b,6c--22 Steel-1 PM |
| 21 Archery 3-D—7 AM Archery Teardown-1PM <i>CH-NRA (TBD) Inst Class—8 AM</i> 7—RF Buffalo—9 AM- 5—MZL-R—10 AM | 22 1-Sporting Rifle—5 PM --temporarily suspended | 23 1—WTSP—6 PM | 24 2—Open Trap—5 PM League(8)—6 PM | 25 1-Outdr Bullseye-6 PM | 26 1—TAWAW—6 PM | 27 3,4,5,6a,6b,6c—USPSA Setup—1 PM |
| 28 3,4,5,6a,6b,6c--- USPSA—9 AM | 29 <u>Memorial Day</u> 1-Sporting Rifle—5 PM | 30 1—WTSP—6 PM | 31 2—Open Trap—5 PM League(9)—6 PM | | | |

2017

Note that the number in front of the event indicates the range that the activity is taking place at.

Last Updated: 4/17/2017

Chillicothe Sportsmen's Club Calendar of Activities

June

| Sun | Mon | Tue | Wed | Thu | Fri | Sat |
|--|---|----------------------------|--|-----------------------------|--------------------------|---|
| | | | | 1 2—Open Trap—6 PM | 2 | 3 Outdoor Work Party—8 AM Archery Work Party—8 AM 5—USRA—8 AM CH—Trap--Archery— 4H Regional Meet— 8 AM—5 PM |
| 4 2—Open Trap—9 AM 7—CF Buffalo—9 AM 5—MZL-R—10 AM | 5 1-Sporting Rifle—5 PM 2—Pheasants Forever— 6 PM | 6 1—WTSP—6 PM | 7 2—Open Trap—5 PM League(10)—6 PM | 8 1-Outdr Bullseye-6 PM | 9 | 10 Indr & CH Clean-9 AM 1-Mauser Match—9 AM 4,5—Cowboy Setup—3 PM |
| 11 4,5--Cowboy—9 AM | 12 1-Sporting Rifle—5 PM 2—Pheasants Forever— 6 PM | 13 Board Meeting 6:30PM | 14 <i>Flag Day</i> 2—Open Trap—5 PM League(11)—6 PM | 15 2—Open Trap—6 PM | 16 Archery Setup—9 AM | 17 Archery 3-D—7 AM 1—HPR—7:30 AM 5—Bowling Pin—9 AM 6a,6b,6c--22 Steel-1 PM |
| 18 <i>Father's Day</i> Archery 3-D—7 AM Archery Teardown-1PM 2—Open Trap—9 AM 7—RF Buffalo—9 AM 2—MZL-Clay Bird Match—9 AM Newsletter Submission Deadline | 19 1-Sporting Rifle—5 PM 2—Pheasants Forever— 6 PM CH—NMO—6:30 PM | 20 1—WTSP—6 PM | 21 2—Open Trap—5 PM League(12)—6 PM | 22 1-Outdr Bullseye-6 PM | 23 1—TWAW—6 PM | 24 1—CLOSED FOR ATA 2—ATA DOUBLES MARATHON—8 AM 3,4,5,6a,6b,6c—USPSA Setup—1 PM |
| 25 3,4,5,6a,6b,6c--- USPSA—9 AM | 26 1-Sporting Rifle—5 PM 2—Pheasants Forever— 6 PM | 27 1—WTSP—6 PM | 28 2—Open Trap—5 PM League(13)—6 PM | 29 2—Open Trap—6 PM | 30 | |

2017

Note that the number in front of the event indicates the range that the activity is taking place at.

Last Updated: 4/17/2017