

# Chillicothe Sportsmen's Club News July 2017

WEB PAGE <http://www.chillisportsmen.org/>

Chillicothe Sportsmen's Club, Inc.

PO Box 13, Chillicothe, IL. 61523-0013

Webmaster [Tim Vik-webmaster@chillisportsmen.org](mailto:Tim_Vik-webmaster@chillisportsmen.org)

## CONTACTS

If you have any questions or concerns about your Club you may contact any Club Officer listed below or any board member.

<b>President</b>	<b>V-President</b>	<b>Secretary</b>	<b>Treasurer</b>
Chris Bach	Steve Risinger	Tim Vik	Lowell Bennett
(309)256-1712	(309)449-6268	(309)258-4809	(309) 274-5586

---

## NOTICES & INFORMATION

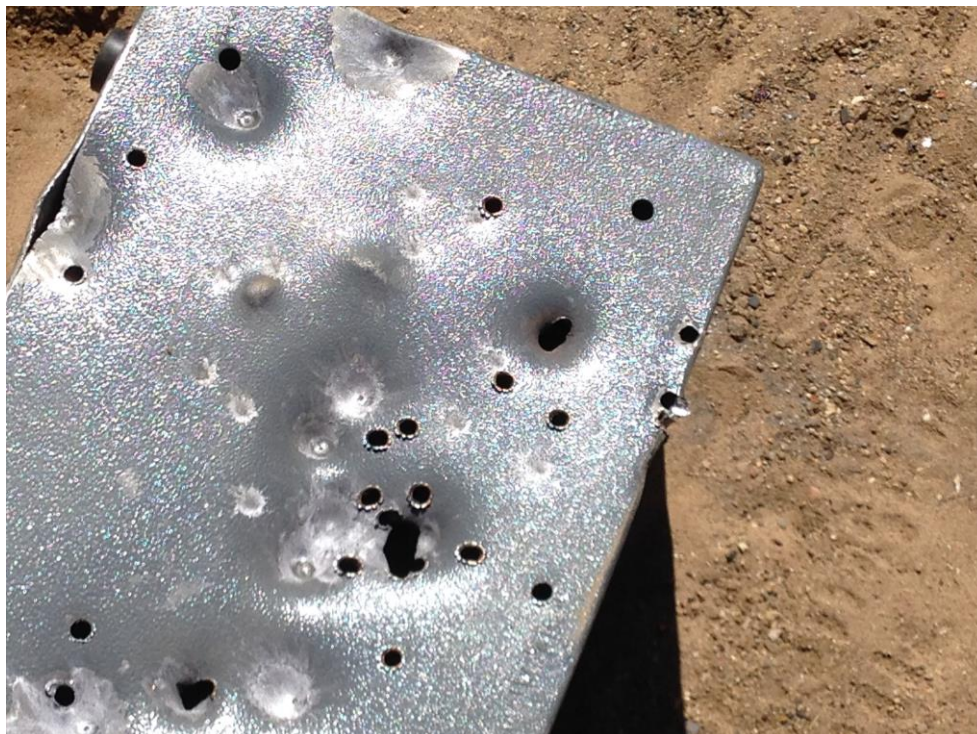
**NEW PISTOL RANGES (BAYS) ARE NOW OPEN:** Take the New Road up to the New Pistol Ranges (Bays). There are 6 Bays & they have targets, burn barrels, and tables to hold your equipment while you are shooting. Shelters (like in the current Pistol Bays) will be installed in the future when funds become available, hopefully in 2018. (Cont'd on P-4)

**USPSA MATCHES:** Effective with the JUNE Match, USPSA Matches will be moving up to the new Pistol Bays. Additionally, setup will be on Saturday Mornings, matches on Saturday Afternoons & Sunday Mornings, with tear-down on Sunday Afternoons. The lower Pistol Ranges/Bays (3, 4, 5, 6A, 6B, 6C) are now available for non-shooting event users.

**Women In The Outdoors:** *With the unfortunate demise of Don Clemens a New Certified Pistol Instructor is needed to run the Pistol Events on Friday Evening & Saturday Morning & Afternoon.* Additional volunteers are also needed to assist with this & other programs on Saturday, August 27. To volunteer - call - Maria Geiger @ (309) 274-6823.

**Improper Targets:** It has been repeatedly stated in past issues of this newsletter that certain types of items are not proper targets. This information is also reflected in the Club By-Laws and Range Rules.

**Look at the pictures below:** Picture on TOP is small safe that was used as a target on Saturday morning, June 10, on Range 6B. ***Try to imagine where all of the ricochets went.*** Picture on the BOTTOM shows the two (2) vehicles, a Red Jeep & a light colored sedan, that were parked on Range 6B during this activity. If anyone knows who either or both these vehicles belong to, please contact any Officer or Board Member and inform them of these person's identities.



## 2017 WORK HOURS

Remember Work Hours fees has been increased to \$15.00, for every work hour not worked in 2017, when you have to pay your membership renewal fees for 2018. This could cost you up to \$150.00 for hours not worked. Work Hour Credits can be credited for assisting with many of the Club's various events (check with the various event directors' to find out where assistance is needed) or participating in any of the scheduled monthly work parties.

**OUTDOOR WORK PARTY:** Saturday, July 1, 8 AM. Work will include cleaning up the grounds, dumping barrels, cleaning up fallen tree limbs, repairing targets, etc. ALL RANGES WILL BE CLOSED, EXCEPT FOR ANY SCHEDULED EVENTS, UNTIL AFTER THE WORK PARTY IS FINISHED!!! Contact Steve Schneckenburger @ (309) 657-0170 for more information.

**ARCHERY WORK PARTY:** Saturday, July 1, 8 AM. Work will include clearing trails, clearing target areas, cutting back honeysuckle. Chainsaws & hedge trimmers are needed. Questions - call Bill Schneckenburger @ (309) 339-1378.

**CLUBHOUS & INDOOR RANGE CLEANUP:** Saturday, July 8, 8 AM. Work includes cleaning the Indoor Range and the Main Hall, Entrance Area, Restrooms, Windows, etc. Questions - call Bob Bjerke @ (309) 692-1800.

## MAUSER MATCHES

Informal slow fire, high-power rifle matches shot from 50 meters on the SR-1 target. Acceptable rifles: 1) Any center-fire rifle with open sights; 2) Any pre-1964 improved military bolt action repeater (Ordonnanzgewehr); 3) Unimproved M-1 Garand or M-1 Carbine.

## AFFILIATIONS

**Your club is affiliated with the following organizations:**

<u>NRA</u>	<u>ISRA</u>	<u>CMP</u>	<u>USPSA</u>	<u>SASS</u>
------------	-------------	------------	--------------	-------------

NRA	National Rifle Association	Affiliation Number	#R0570	
ISRA	Illinois State Rifle Association	Affiliation Number	#00282	
CMP	Civilian Marksmanship Program	Affiliation Number	#5208	
USPSA	United States Practical Shooting Association	Affiliation Number	IL-08	
SASS	Single Action Shooting Society			

## EVENTS

Check the July Club Calendar for the scheduled events.  
Also check the August Calendar for scheduled events.

### Cont'd From P-1: Renumbering & New Ranges/Bays Numbering:

New Range #7 - 100 yd. Rifle Range to be constructed on top & left of new road (behind the current Pistol Range #5 & Bays 6a, 6b, 6c).

New Pistol Ranges/Bays - #8a, 8b, 8c, 8d, 8e, 8f

Range #9: reserved for future use.

Old Range #7 will now be referred to as Range #10

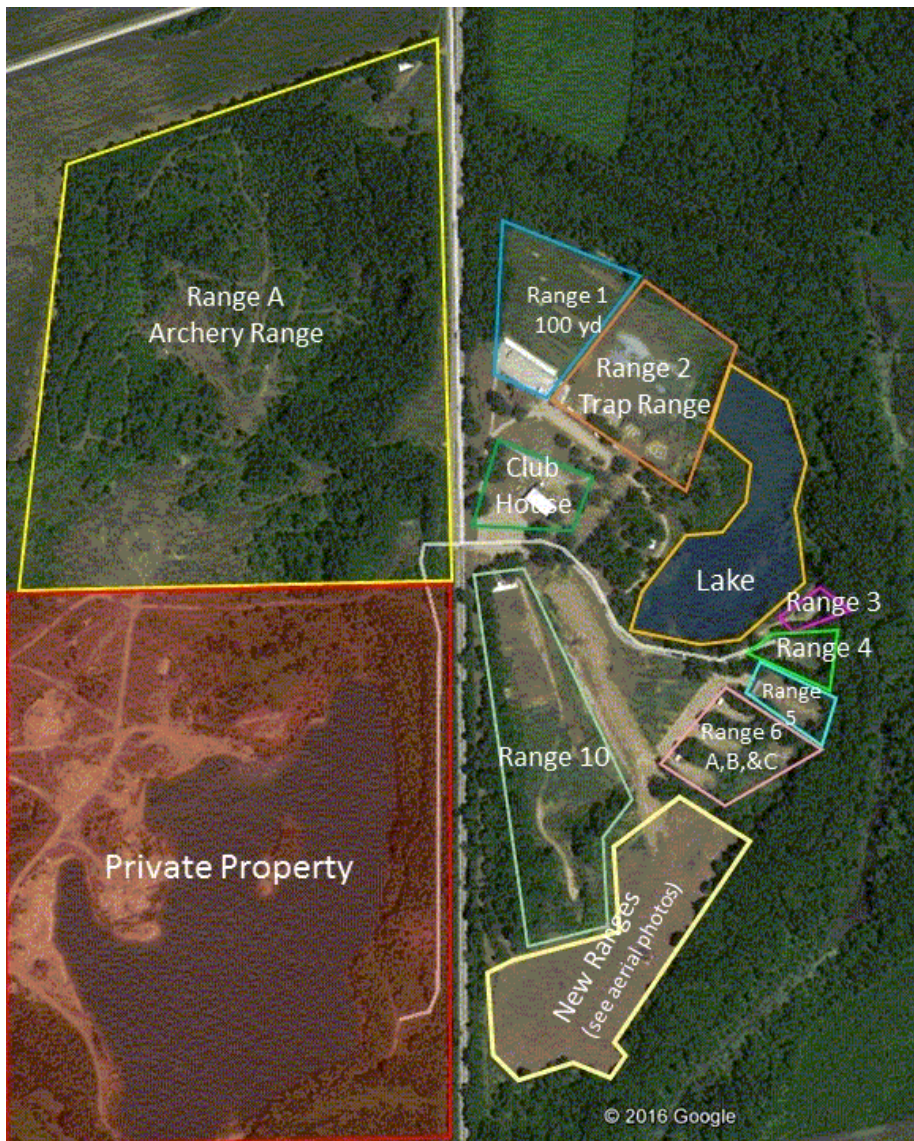
Archery Range will be referred to as Archery - A.

## RANGE NUMBERS

The following are the range numbers:

<u>RANGE</u>	<u>LOCATION</u>
1 --	100 Yard Range
2 --	Trap range
3 --	Short lakeside range (just north of Cowboy Town)
4 --	Cowboy Town
5 --	Practice Range
6 --	3 - bays (A, B, C)
7 --	New 100 yard range (Not useable yet)
8 --	6 - bays (A, B, C, D, E, F)
9 --	Reserved for future use
10 --	300 Yard Range (old range 7)
A --	Archery Range





## Chillicothe Sportsmen's Club Calendar of Activities

# July

<i>Sun</i>	<i>Mon</i>	<i>Tue</i>	<i>Wed</i>	<i>Thu</i>	<i>Fri</i>	<i>Sat</i>
<b>30</b> 4,5,6a,6b,6c—3 Gun Match—8 AM	<b>31</b> 1-Sporting Rifle—5 PM 2—Pheasants Forever—6 PM					<b>1</b> Outdoor Work Party—8 AM Archery Work Party—8 AM
<b>2</b> 1—CLOSED FOR ATA 2—ATA MATCH—8 AM 10—CF Buffalo—9 AM 5—MZL-R—10 AM	<b>3</b> 1-Sporting Rifle—5 PM 2—Pheasants Forever—6 PM	<b>4</b> <i>Independence Day</i> 1—WTSP—6 PM	<b>5</b> 2—Open Trap—5 PM League(14)—6 PM	<b>6</b> 2—Open Trap—6 PM	<b>7</b>	<b>8</b> Indr & CH Clean-8 AM 1-Mauser Match—9 AM 4,5--Cowboy Setup—3 PM
<b>9</b> 4,5--Cowboy—9 AM	<b>10</b> 1-Sporting Rifle—5 PM 2—Pheasants Forever—6 PM	<b>11</b> <b>Board Meeting 6:30PM</b>	<b>12</b> 2—Open Trap—5 PM League(15)—6 PM	<b>13</b> 1-Outdr Bullseye-6 PM	<b>14</b> Archery Setup—9 AM CH-NRA (TBD) Inst Class—6 PM	<b>15</b> Archery 3-D—7 AM CH-NRA (TBD) Inst Class—8 AM 1—HPR—7:30 AM 5—Bowling Pin—9 AM 6a,6b,6c--22 Steel-1 PM
<b>16</b> Archery 3-D—7 AM Archery Teardown-1PM CH-NRA (TBD) Inst Class—8 AM 2—Open Trap—9 AM 10—RF Buffalo—9 AM 5—MZL-R—10 AM <b>Newsletter Submission Deadline</b>	<b>17</b> 1-Sporting Rifle—5 PM 2—Pheasants Forever—6 PM	<b>18</b> 1—WTSP—6 PM	<b>19</b> 2—Open Trap—5 PM League(16)—6 PM	<b>20</b> 2—Open Trap—6 PM	<b>21</b>	<b>22</b> 8a,8b,8c,8d,8e,8f— USPSA Setup—8 AM
<b>23</b> 8a,8b,8c,8d,8e,8f-- USPSA—9 AM	<b>24</b> 1-Sporting Rifle—5 PM 2—Pheasants Forever—6 PM	<b>25</b> 1—WTSP—6 PM	<b>26</b> 2—Open Trap—5 PM League(17)—6 PM	<b>27</b> 1-Outdr Bullseye-6 PM	<b>28</b> 5—TAWW—6 PM	<b>29</b> 4,5,6a,6b,6c—3 Gun Match Setup—1 PM
<b>30</b> 4,5,6a, 6b,6c—3 Gun Match	<b>31</b> 1-Sporting Rifle—5 PM 2—Pheasants Forever—6 PM					

# 2017

Note that the number in front of the event indicates the range that the activity is taking place at.

Last Updated: 6/22/2017

# Chillicothe Sportsmen's Club Calendar of Activities

## August

Sun	Mon	Tue	Wed	Thu	Fri	Sat
		1—WTSP—6 PM <b>1</b>	2—Open Trap—5 PM League(18)—6 PM <b>2</b>	2—Open Trap—6 PM <b>3</b>	<b>4</b>	Outdoor Work Party—8 AM Archery Work Party—8 AM Indr & CH Clean-8 AM 5—USRA—8 AM <b>5</b>
2—Open Trap—9 AM 10—CF Buffalo—9 AM 2—MZL-Clay Bird Match—9 AM <b>6</b>	1-Sporting Rifle—5 PM <b>7</b>	<b>8</b> Board Meeting 6:30PM	2—Open Trap—5 PM League(19)—6 PM Hunter Ed Setup—7 PM <b>9</b>	CH—Hunter Ed—5 PM 1-Outdr Bullseye-6 PM <b>10</b>	CH—Hunter Ed—5 PM <b>11</b>	CH—Hunter Ed—8 AM 1-Mauser Match—9 AM 4,5--Cowboy Setup—3 PM <b>12</b>
4,5--Cowboy—9 AM Newsletter Submission Deadline <b>13</b>	1-Sporting Rifle—5 PM <b>14</b>	1—WTSP—6 PM <b>15</b>	2—Open Trap—5 PM League(20)—6 PM <b>16</b>	2—Open Trap—6 PM <b>17</b>	Archery Setup—9 AM 5—TWAW—6 PM <b>18</b>	Archery 3-D—7 AM 1—HPR—7:30 AM 5—Bowling Pin—9 AM 6a,6b,6c--22 Steel-1 PM <b>19</b>
Archery 3-D—7 AM Archery Teardown-1PM 2—Open Trap—9 AM 10—RF Buffalo—9 AM 5—MZL-R—10 AM <b>20</b>	1-Sporting Rifle—5 PM <b>21</b>	1—WTSP—6 PM <b>22</b>	2—Open Trap—6 PM <b>23</b>	1-Outdr Bullseye-6 PM <b>24</b>	CH—WITO SETUP Indr—WITO-Pistol-PM <b>25</b>	WITO—All Day—All Ranges 8a,8b,8c,8d,8e,8f— USPSA Setup—8 AM <b>26</b>
8a,8b,8c,8d,8e,8f--- USPSA—9 AM <b>27</b>	1-Sporting Rifle—5 PM <b>28</b>	1—WTSP—6 PM <b>29</b>	CH—Trap League Banquet—6 PM <b>30</b>	<b>31</b>		

# 2017

Note that the number in front of the event indicates the range that the activity is taking place at.

Last Updated: 6/22/2017